



Wilkinson Close,
Sutton Coldfield, B73 5QG

£165,000

£165,000

2  1  1 

Ideally located for a wealth of local amenities including superior transport links and shops this first floor two bed maisonette offers the advantage of no onward chain along with a rear garden, garage and drive. The accommodation itself includes a well proportioned living room with kitchen off and bathroom with white suite. An early viewing must be undertaken in order to fully appreciate the opportunity on offer and avoid disappointment.





Property Specification

SUPERBLY LOCATED FIRST FLOOR MAISONETTE
TWO GOOD SIZE BEDROOMS
NO ONWARD CHAIN
GARAGE AND DRIVEWAY
WELL PROPORTIONED LIVING ROOM

Entry

Landing

Living Room 3.96m (13') x 3.73m (12'3")

Kitchen 2.77m (9'1") x 1.91m (6'3")

Bathroom

Bedroom 1 4.38m (14'5") x 3.02m (9'11")

Bedroom 2 3.41m (11'2") max x 2.48m (8'1")

Store

Agent's Note:

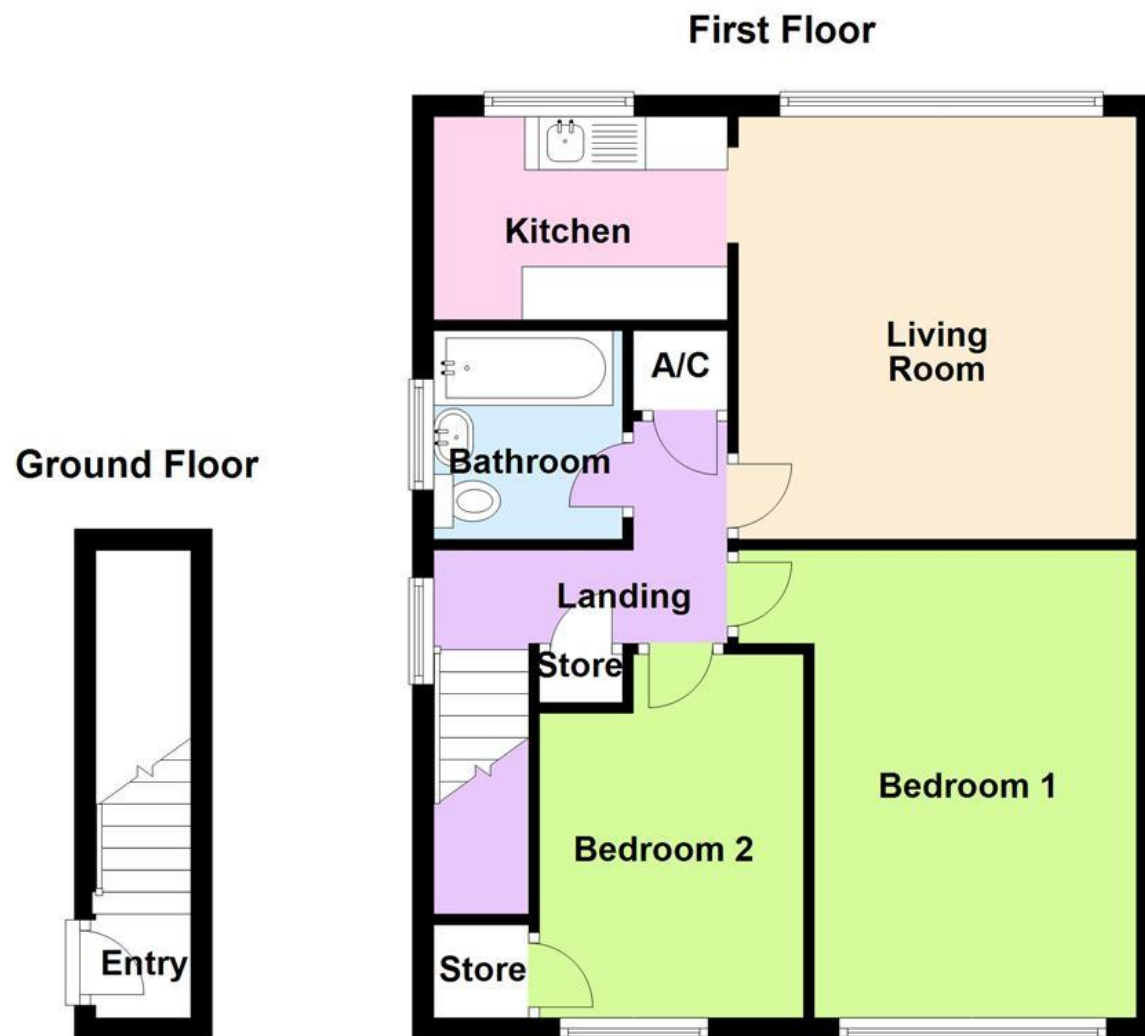
Every care has been taken with the preparation of these Sales Particulars but they are for general guidance only and complete accuracy cannot be guaranteed. If there is any point which is of particular importance, professional verification should be sought. The mention of any fixtures, fittings and/or appliances does not imply they are in full efficient working order as they have not been tested. All dimensions are approximate. Photographs are reproduced for general information and it cannot be inferred that any item shown is included in the sale. These Sales Particulars do not constitute a contract or part of a contract.
Came on the market: 9th December 2024

Viewer's Note:

Services connected:
Council tax band: B
Tenure: Leasehold years remaining, lease from
Ground Rent: TBC
Service Charge: TBC
Restrictions:

Floor Plan

This floor plan is not drawn to scale and is for illustration purposes only



Energy Efficiency Rating

Score	Energy rating	Current	Potential
92+	A		
81-91	B		
69-80	C		77 C
55-68	D		
39-54	E	44 E	
21-38	F		
1-20	G		

Map Location

